

# SERVICE THREAD CLASS 7

**Parts Manual**



**Technical Support**

1 (800) 951 7397

[support@servicethread.com](mailto:support@servicethread.com)

[www.servicethread.com](http://www.servicethread.com)

©2019 Service Thread.

## **Contents**

Frame & Miscellaneous Cover Components	<b>1</b>
Main Shaft & Needle Bar Components	<b>2</b>
Upper Feed Mechanism Components	<b>3</b>
Presser Bar Components	<b>4</b>
Feed Regulator Mechanism Components	<b>5</b>
Hook Driving Shaft Components	<b>6</b>
Feed Mechanism Components	<b>7</b>
Knee Lifter & Tension Post Components	<b>8</b>
Belt Cover & Accessories Parts Components	<b>9</b>



**Maximum speed** 600 stiches per minute (SPM)

**Clutch motor size** 600W

**Motor speed** 1,725 RPM

**Input** 110 V

**Stitch type** 301 lockstitch

**Stitch length** Max 2 stiches per inch (SPI)

**Stitch adjustment/reverse** Lever and foot pedal standard

**Thread** #415 or #554 nylon or poly standard

**Hook** Longbeak shuttle hook

**Bobbin** Style 41 prewound bobbin (standard)

**Needle size** 1000H or 6×3

**Feeding** Upper and lower feed, reverse stitch

**Presser foot** Alternating

**Presser lift** 1.5" Single Row, 1.25" Double Row

**Needle bar stroke** 2.60 inches

**Thread take-up** Cam motion

**Take-up thread stroke** 4.64 inches

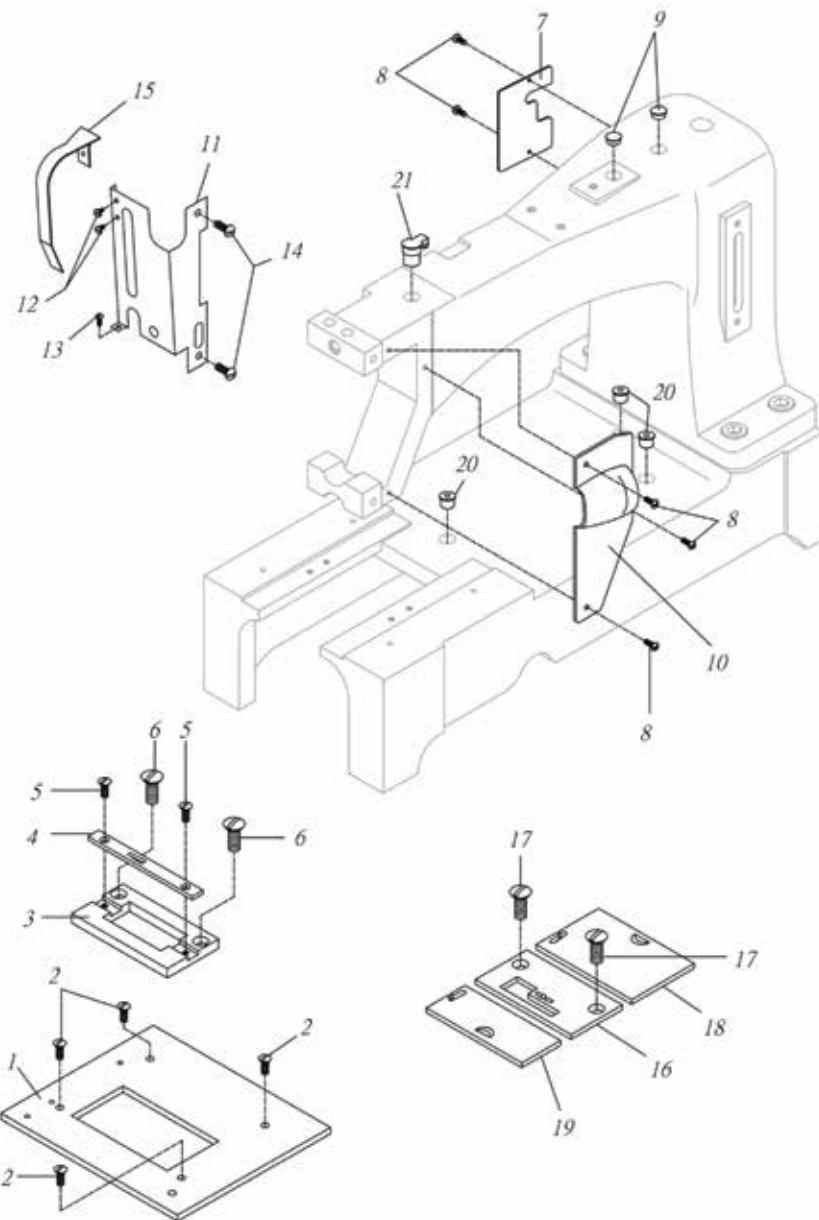
---

Parts are compatible with Consew, Seiko, and Singer except selected improvements for sling sewing

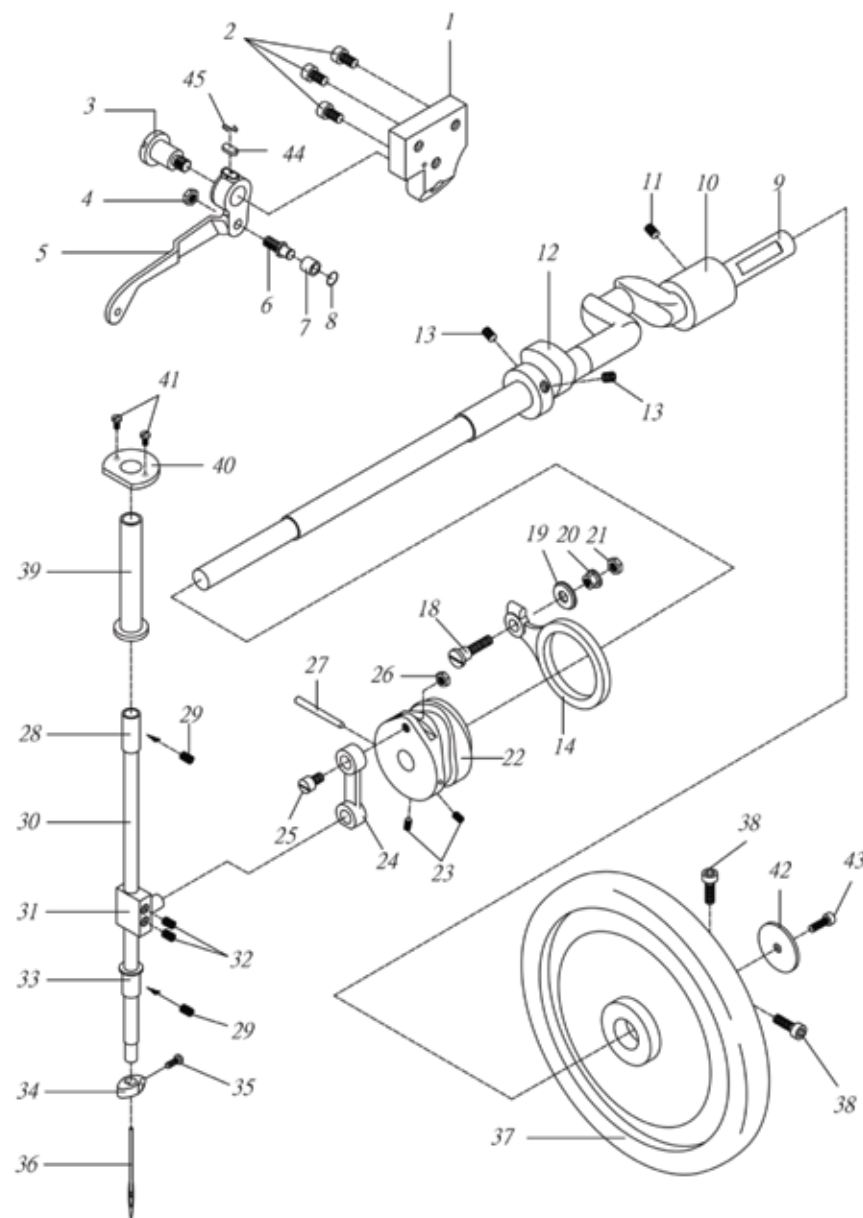
REF. NO.	PART NO.	DESCRIPTION	QTY.
1	35194	CLOTH PLATE	1
2	35195	SCREW 3/16-32 L=8	4
3	35192	THROAT PLATE BODY	1
4	35190	THROAT PLATE	1
5	35191	SCREW 3/16-32 L=6	2
6	35193	SCREW 15/64-28 L=11	2
7	35168	ARM SIDE COVER	1
8	8093	SCREW 9/64-40 L=7	5
9	PLUG	RUBBER PLUG	2
10	35167	ARM FACE COVER	1
11	35031	FACE PLATE	1
12	30047	SCREW M4×0.7 L=4	2
13	8040	SCREW 9/64-40 L=7	1
14	13005	SCREW 15/64-28 L=11	2
15	35032	THREAD TAKE-UP LEVER COVER	1
16	35175	THROAT PLATE	1
17	35193	SCREW 15/64-28 L=11	2
18	35178	BED SLID (RIGHT)	1
19	35177	BED SLID (LEFT)	1
20	35209	BALL TYPE OIL CUP	3
21	35013	OIL CUP (LG)	1

For double  
presser foot

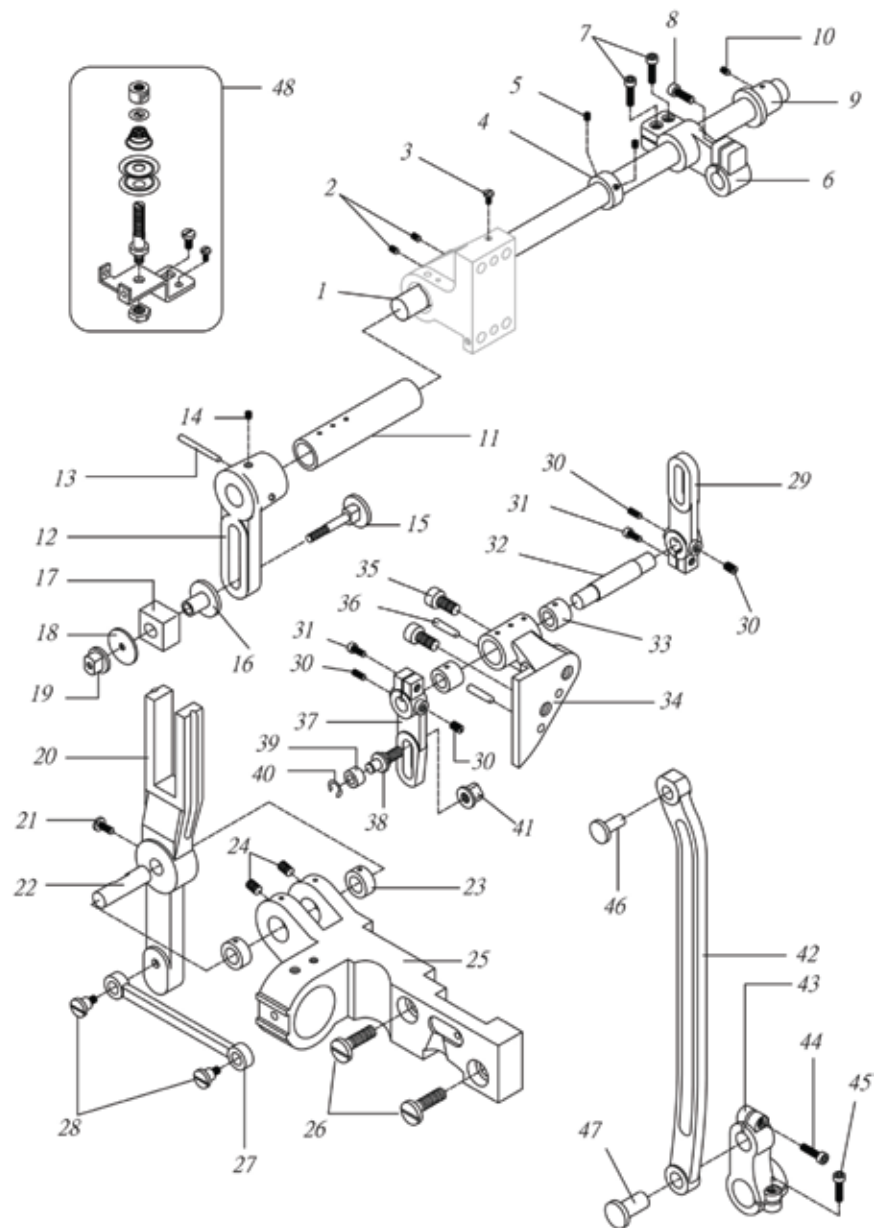
For single  
presser foot



REF. NO.	PART NO.	DESCRIPTION	QTY.
1	35033	TAKE-UP LEVER BRACKET	1
2	35034	SCREW M6*1 L=20	3
3	35036	HINGE SCREW 3/8-18	1
4	8105	NUT 9/32-28	1
5	35035C	TAKE-UP LEVER	1
6	35039	SCREW STUD 9/32-28 L=13	1
7	35038	ROLLER	1
8	35038A	E-RING	1
9	35010	ARM SHAFT	1
10	35011	ARM SHAFT BUSHING	1
11	35012	SCREW 5/16-24 L=10	1
12	35045	FEED DRIVING ECCENTRIC	1
13	35017	SCREW 5/16-24 L=8	2
14	35102	ECCENTRIC ROD	1
18	35105	HINGE SCREW 9/32-28 L=20	1
19	35107	WASHER 7*21*3	1
20	35106	NUT 9/32-28	1
21	8105	NUT 9/32-28	1
22	35302	THREAD TAKE-UP CAM 66MM	1
23	35017	SCREW 5/16-24 L=8	2
24	35303	NEEDLE BAR CONNECTING LINK	1
25	35020	SCREW 3/8-28 L=10	1
26	6027-2	NUT 3/8-28	1
27	35018	PIN 5*70	1
28	35143	BUSHING	1
29	10761	SCREW 15/64-28 L=7	2
30	35022	NEEDLE BAR	1
31	35304	NEEDLE BAR CONNECTING STUD	1
32	35017	SCREW 5/16-24 L=8	2
33	35022A	BUSHING	1
34	35024	NEEDLE CLAMP	1
35	16256	SCREW 3/16-32 L=10	1
36	N0925	NEEDLE	1
37	35007	BALANCE WHEEL	1
38	35009	SCREW 3/8-16 L=25	2
39	35022B	NEEDLE BAR COVER	1
40	35022C	COVER PLATE	1
41	35022D	SCREW 11/64-40 L=8	2
42	35008A	WASHER	1
43	35008B	SCREW M6*1 L=15	1
44	35035D	OIL FELT	1
45	35035E	FELT RETAIN- E4R	1

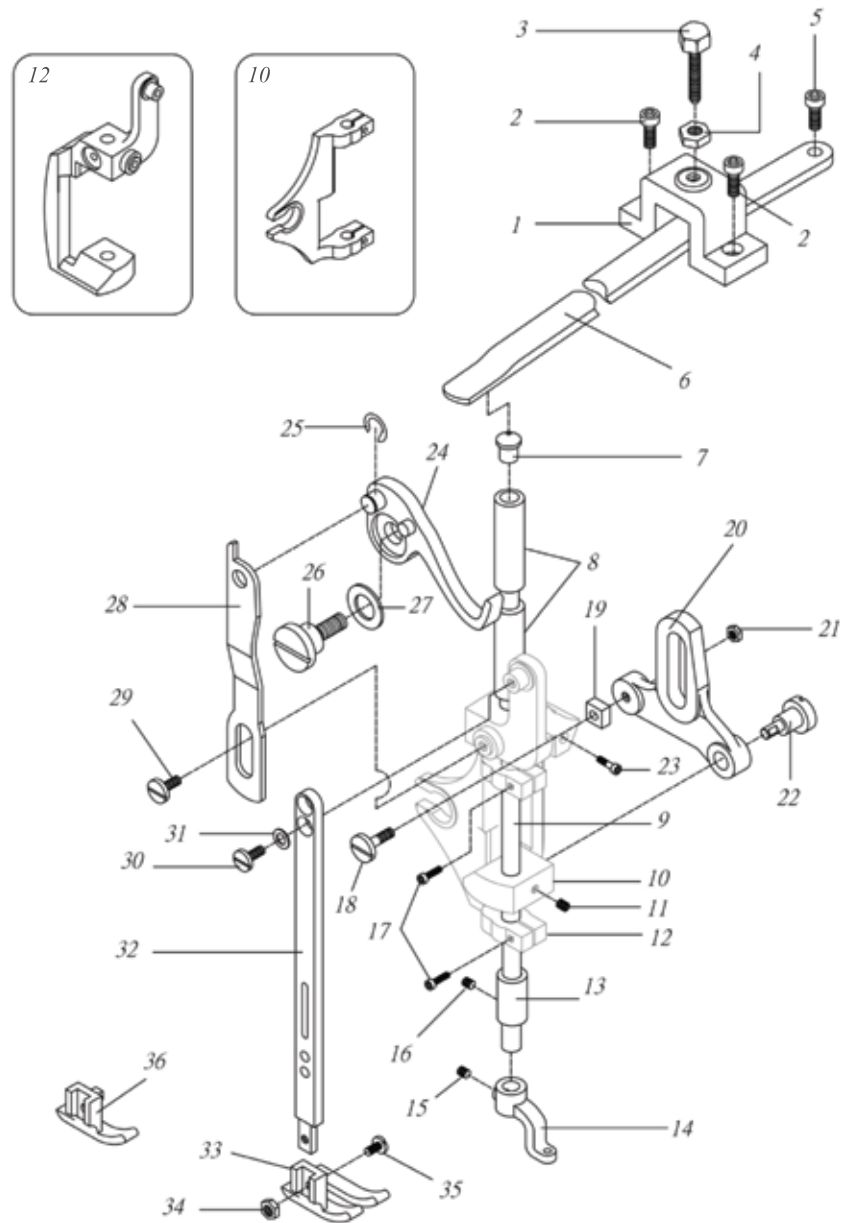


REF. NO.	PART NO.	DESCRIPTION	QTY.
1	35072	UPPER FEED SHAFT	1
2	10524	SCREW 15/64-28 L=8	2
3	6333	SCREW 9/64-40 L=6.5	1
4	35073	COLLAR 16*26*12	1
5	10566	SCREW 15/64-28 L=5	2
6	35069	CRANK	1
7	35034	SCREW M6*1 L=20	2
8	10598	SCREW M6*1 L=18	1
9	35071	BUSHING (REAR)	1
10	10525	SCREW 15/64-28 L=11	1
11	35077	BUSHING (FRONT)	1
12	35078	ADJUSTING ARM	1
13	35295	PIN 5*40	1
14	35017	SCREW 5/16-24 L=8	1
15	35079	HINGE SCREW 7/32-32	1
16	35080	PIPE	1
17	35081	SLIDE BLOCK	1
18	35082	WASHER 5.6*23*2	1
19	10776	NUT 7/32-32	1
20	35083	UPPER FEED FORKED CONNECTION	1
21	10573	SCREW 7/32-32 L=12	1
22	35084	SHAFT	1
23	35085	BUSHING	2
24	10581	SCREW 15/64-28 L=9	2
25	35087	CONNECTING BRACKET	1
26	35223	SCREW 1/4-24 L=16	2
27	35090	CRANK	1
28	35091	HINGE SCREW	2
29	35108	ADJUSTING ARM	1
30	10827	SCREW 1/4-40 L=8	4
31	35101	SCREW 15/64-28 L=15	2
32	35109	STUD	1
33	35110	BUSHING	2
34	35454	BRACKET	1
35	35111	SCREW 3/8-16 L=18	2
36	35112	PIN 6*50	2
37	35113	ADJUSTING ARM	1
38	35114	SCREW STUD 9/32-28	1
39	35113-1	ROLLER	1
40	35113-2	E-RING	1
41	35113-3	NUT 9/32-28	1
42	35067	CONNECTING ROD	1
43	35065	SHAFT CRANK	1
44	35034	SCREW M6*1 L=20	1
45	10519	SCREW M6*1 L=15	1
46	35068	HINGE STUD (UPPER)	1
47	35066	HINGE STUD (LOWER)	1
48	guide	TOP TENSION DEVICE	1

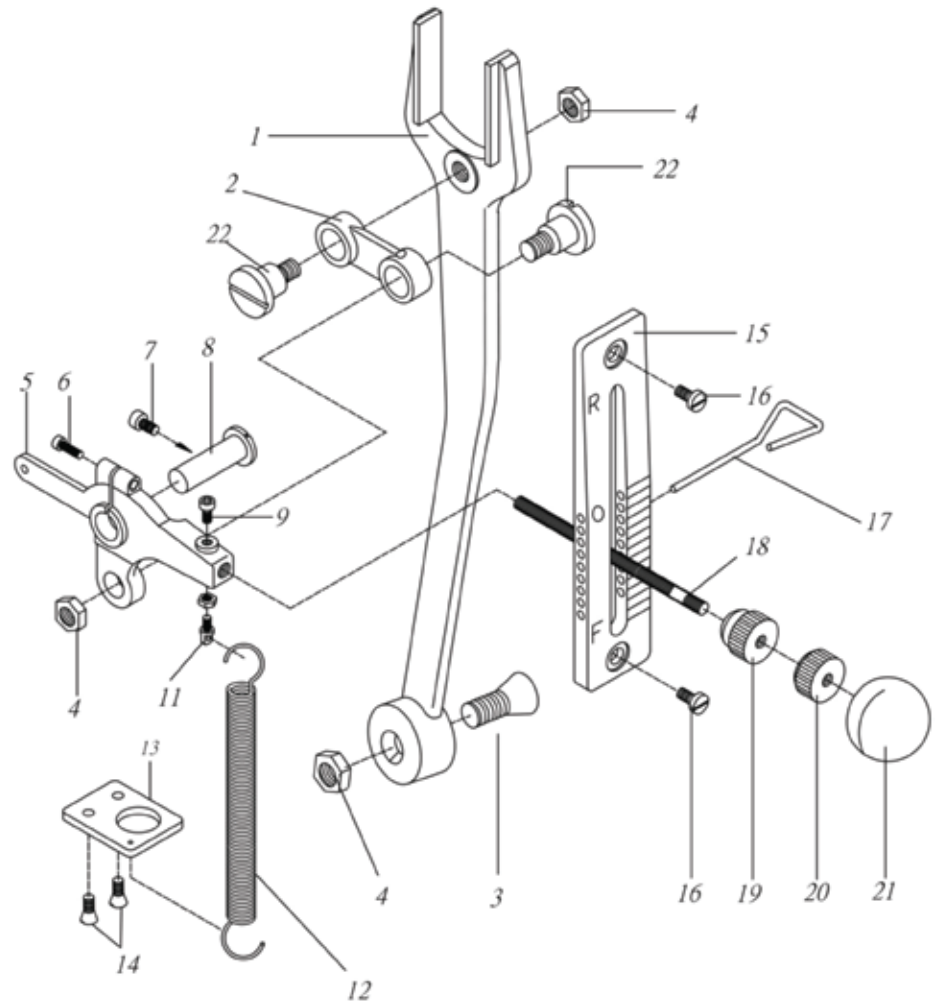




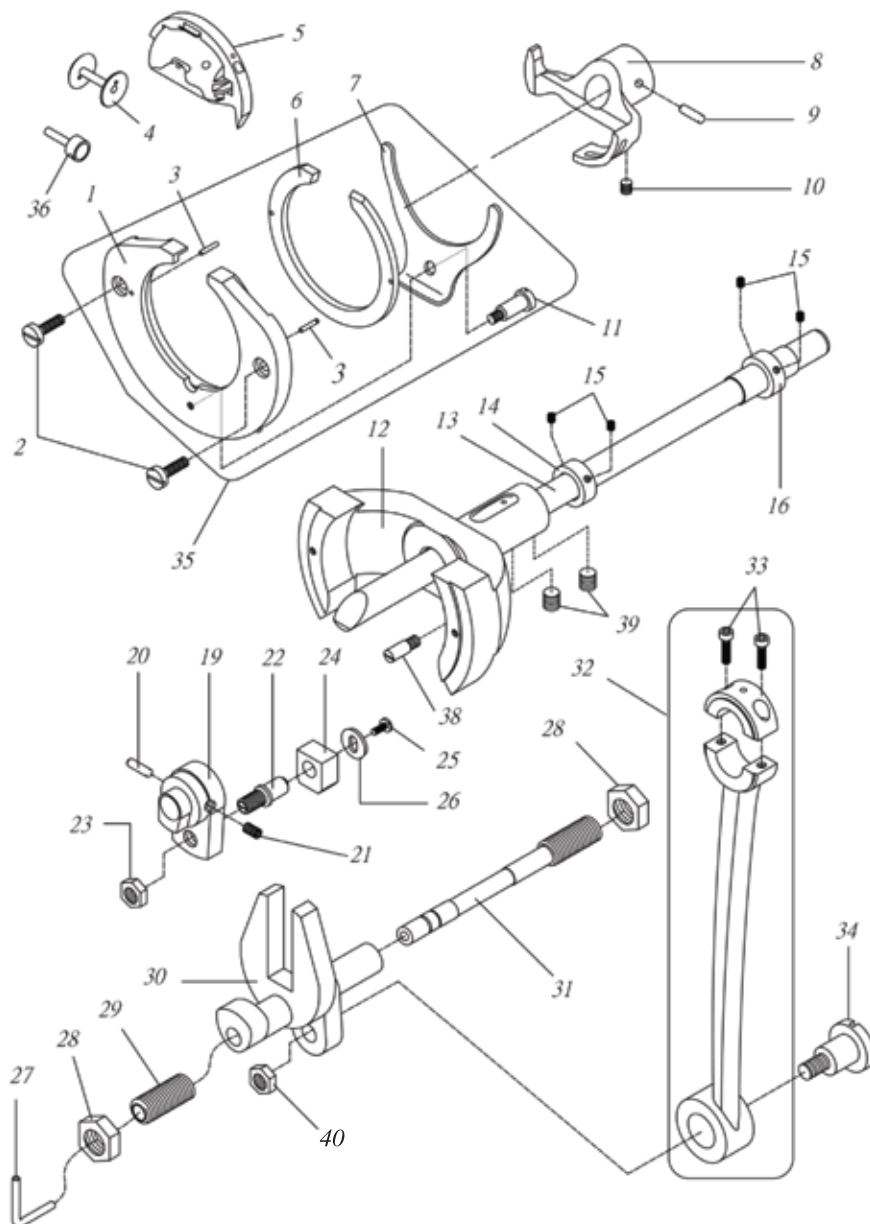
REF. NO.	PART NO.	DESCRIPTION	QTY.
1	35127	BRACKET	1
2	50101	SCREW M6*1 L=25	2
3	35128	SCREW 5/16-18 L=36	1
4	35129	NUT 5/16-18	1
5	10519	SCREW M6*1 L=15	1
6	35125	PRESSER BAR SPRING	1
7	35136	SLEEVE CAP	1
8	35137	PRESSER BAR SLEEVE	2
9	35140	PRESSER BAR	1
10	35139	PRESSER BAR CLAMP	1
11	8009	SCREW 1/4-40 L=12	1
12	35120	PRESSER BAR LIFTING BRACKET	1
13	35023	BUSHING	1
14	35141	INNER PRESSER FOOT	1
15	10828	SCREW 1/4-40 L=6	1
16	10761	SCREW 15/64-28 L=7	1
17	6306	SCREW 3/16-28 L=12	2
18	35116	HINGE SCREW 9/32-28	1
19	35117	SLIDE BLOCK	1
20	35115	OUTER PRESSER BAR BELL	1
21	8105	NUT 9/32-28	1
22	35119N	STUD PIN	1
23	6029	SCREW 3/16-28 L=20	1
24	35147C	PRESSER BAR LIFTING LEVER ASM.	1
25	18826	E-CLIP	1
26	35150	HINGE SCREW 5/16-24	1
27	35151	WASHER 17.4*12.9*0.33	1
28	35308	PRESSER BAR LIFTING LINK	1
29	35154	SCREW 1/4-24 L=11	1
30	8089	SCREW 3/16-32 L=8	1
31	35094	WASHER	1
32	35093	OUTER PRESSER BAR	1
33	35096	OUTER PRESSER FOOT (DOUBLE)	1
34	35098	NUT 3/16-32	1
35	35097	SCREW 3/16-32 L=8	1
36	35174	OUTER PRESSER FOOT (SINGLE)	1



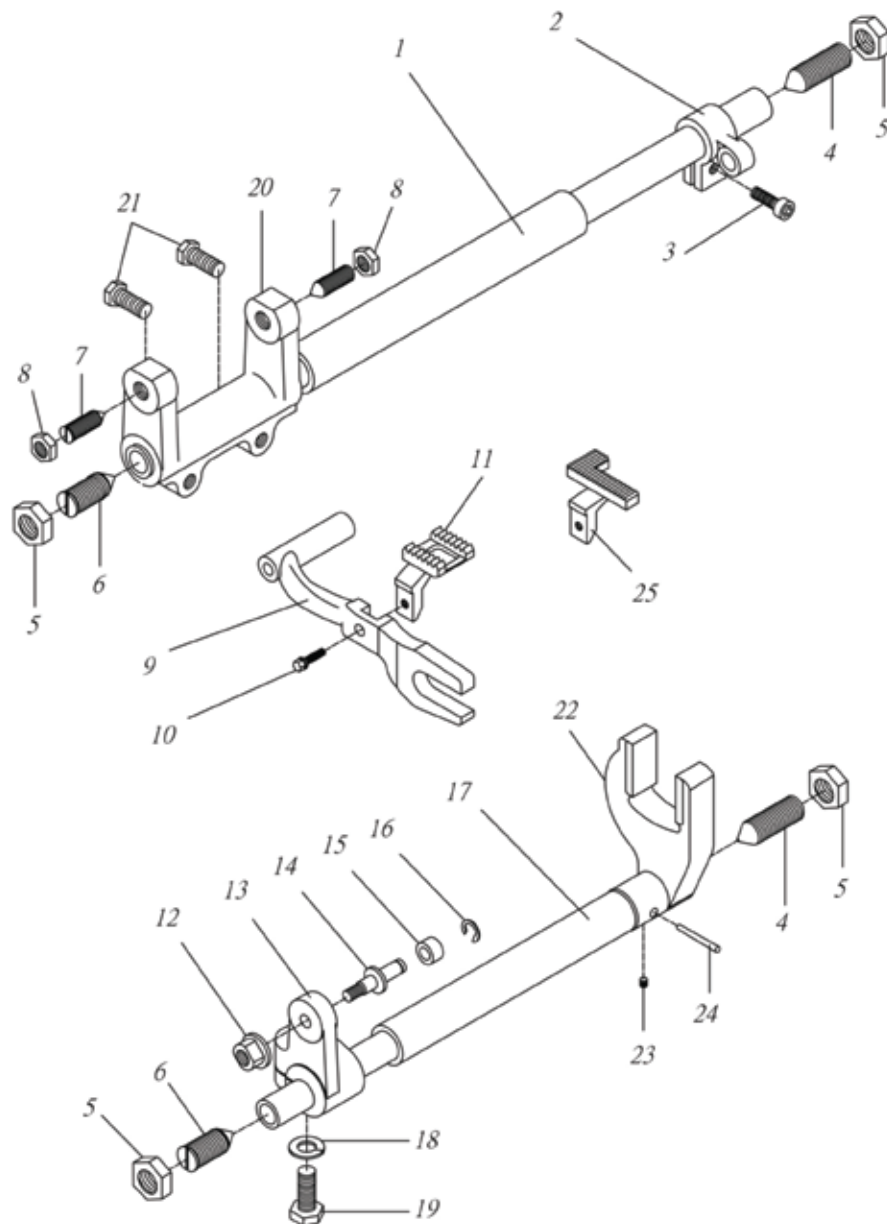
REF. NO.	PART NO.	DESCRIPTION	QTY.
1	35046	FEED FORKED CONNECTION	1
2	35047N	FEED CONNECTING LINK	1
3	35048	SCREW 3/8-28 L=18	3
4	6027-2	NUT 3/8-28	3
5	35049	FEED REGULATOR	1
6	17053	SCREW M5*0.8 L=20	1
7	10519	SCREW 15/64-28 L=12	1
8	35050	FEED REGULATOR SHAFT	1
9	4019	SCREW 3/16-32	1
10	4135	NUT 3/16-32	1
11	17059	SCREW STUD	1
12	35058	SPRING	1
13	35059	BRACKET	1
14	13330	SCREW 11/64-40	2
15	35052	STITCH LENGTH PLATE	1
16	35053	SCREW 15/64-28 L=14	2
17	CALL	LEVER STOPPER	1
18	35051	FEED REGULATING LEVER	1
19	35055	NUT (A) 5/16-28	1
20	35056	NUT (B) 5/16-28	1
21	35057	KNOB	1
22	35048N	SCREW 3/8-28 L=18	2



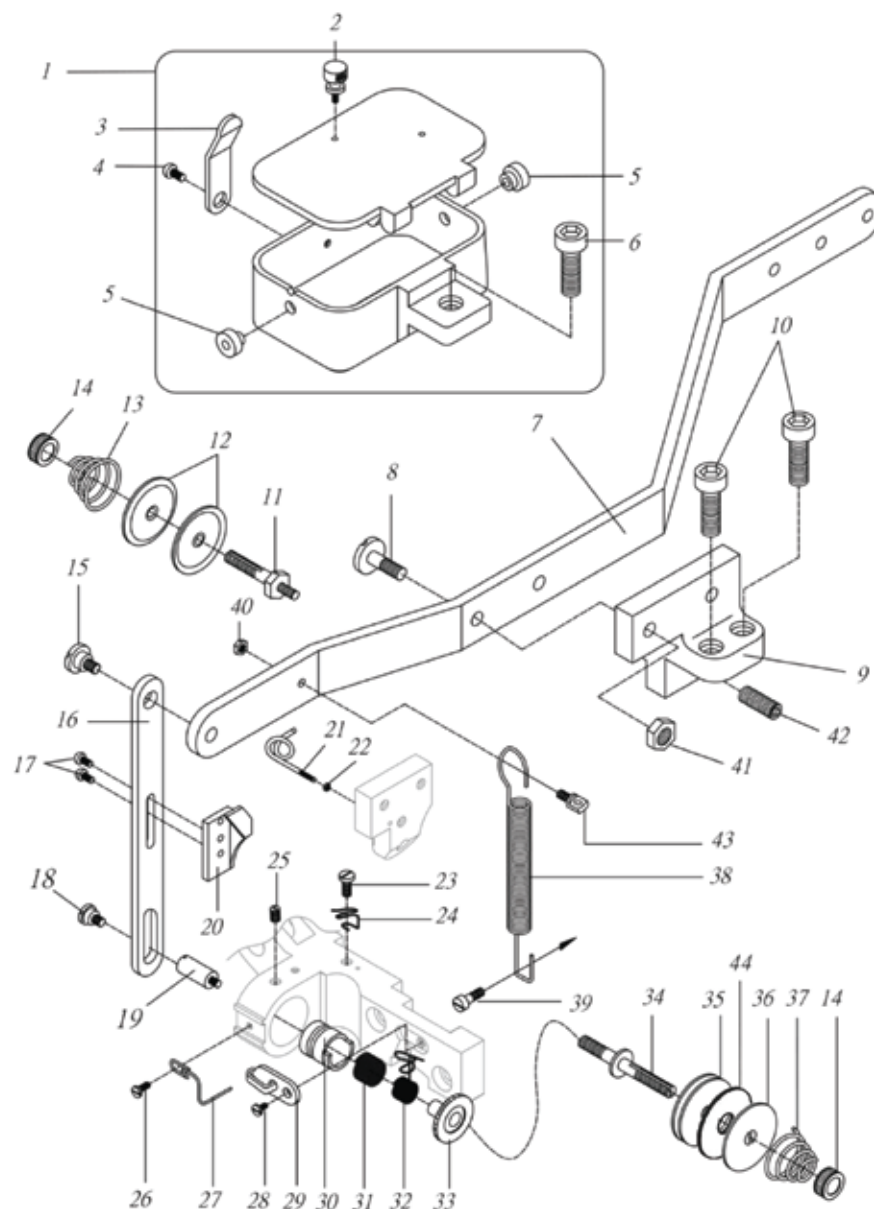
REF. NO.	PART NO.	DESCRIPTION	QTY.
1	35222-1	SHUTTLE RACE BODY	1
2	35223	SCREW 1/4-24 L=16	2
3	35222-2	SHUTTLE RACE BACK POSITION PIN	2
4	35226	BOBBIN	1
5	35224	SHUTTLE HOOK	1
6	35222-3	SHUTTLE RACE BACK	1
7	35222-4	BACK SPRING	1
8	35218	SHUTTLE DRIVER	1
9	35215	PIN 5×40	1
10	35017	SCREW 5/16-24 L=8	1
11	35222-5	HINGE SCREW 1/4-24	1
12	35219	SHUTTLE RACE FRAME	1
13	35216	OSCILATING SHAFT	1
14	35227	COLLAR 19°32'14.5	1
15	10827	SCREW 1/4-40 L=7.5	4
16	35217	COLLAR 20°32'14.5	1
19	35214	OSCILATING SHAFT CRANK	1
20	35215	PIN 5×40	1
21	35017	SCREW 5/16-24 L=8	1
22	35211	HINGE SCREW 1/2-18	1
24	35210	SLIDE BLOCK	1
25	12418	SCREW 13/64-32 L=9	1
26	35212	WASHER	1
27	35208	OIL PIPE & WICK	1
28	35187	NUT 5/8-16	2
29	35207	THUMB SCREW 5/8-16	1
30	35205	OSCILATING ROCK SHAFT	1
31	35206	HINGE PIN	1
32	35201C	CONNECTING ROD ASM.	1
33	35202	SCREW M5×0.8 L=20	2
34	35203N	SCREW 1/2-25 L=25	1
35	35222C	SHUTTLE RACE COMPLETE	1
36	PWBT	BOBBIN PIN	1
38	CALL	SCREW 3/8-28 L=10	1
39	35017	SCREW 5/16×24	2
40	35204	CONE BOLT NUT	1



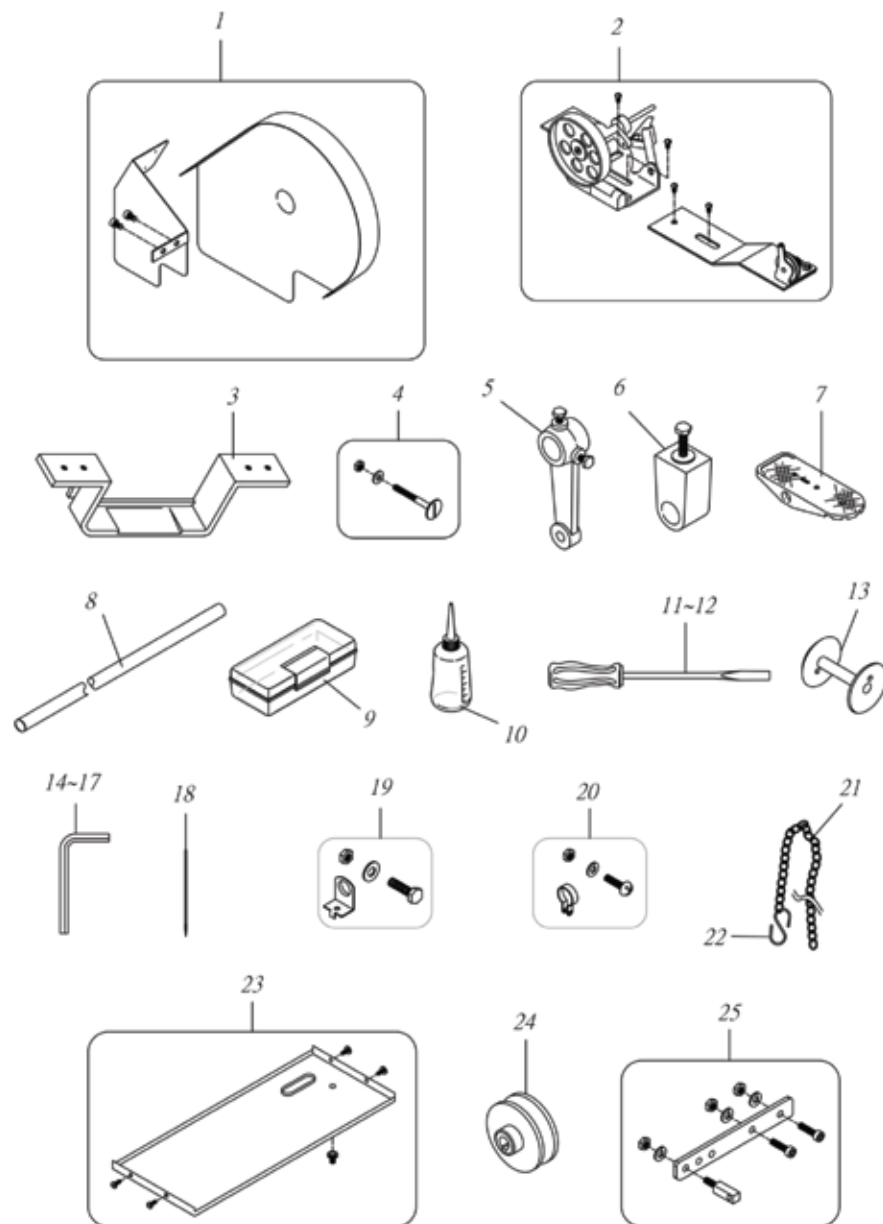
REF. NO.	PART NO.	DESCRIPTION	QTY.
1	35184N	FEED ROCK SHAFT	1
2	35182	CRANK	1
3	35034	SCREW M6*1 L=20	1
4	35185	SCREW 5/8-16 L=52	2
5	35187	NUT 5/8-16	4
6	35186	SCREW 5/8-16 L=41	2
7	6027-1	SCREW 3/8-28 L=20	2
8	6027-2	NUT 3/8-28	2
9	35188	FEED BAR	1
10	1368	SCREW 15/64-28 L=8.5	1
11	35189	FEED DOG	1
12	35235	NUT 9/32-28	1
13	35233	ROCK SHAFT CRANK	1
14	35235-2	SCREW STUD 9/32-28	1
15	35235-3	ROLLER	1
16	35235-4	E-RING	1
17	35232-1	DRIVING SHAFT	1
18	35235-5	WASHER 10*16.5*2	1
19	35235-6	SCREW 3/8-16 L=25	1
20	35184-1	FEED BAR ARM	1
21	35184-2	SCREW M8*1.25 L=20	2
22	35232-2	DRIVING SHAFT ARM	1
23	35232-3	SCREW	1
24	35232-4	PIN	1
25	35176	FEED DOG (FOR SINGLE PRESSER FOOT)	1



REF. NO.	PART NO.	DESCRIPTION	QTY.
1	35157C	OIL BOX ASM.	1
2	10699	THUMB SCREW 3.4×36	
3	35157-04	OIL BOX COVER SPRING	
4	8100	SCREW 9/64-40 L=6.5	
5	35157D	PIPE	2
6	35223	SCREW 1/4×24 L=16	
7	35131	FOOT LIFTING LEVER	1
8	35134	HINGE SCREW 1/4-24	1
9	35130	BRACKET	1
10	35034	SCREW M6×1 L=16	1
11	4171	TENSION STUD 3/16-32	1
12	1423	TENSION DISC	2
13	1422	TENSION SPRING	1
14	8079	TENSION THUMB NUT 1/4-40	2
15	10712	HINGE SCREW 1/4-24 D=7.94 H=3.9	1
16	35132	LIFTING BRACKET	1
17	6333	SCREW 9/64-40 L=7	1
18	10712	HINGE SCREW 1/4-24	1
19	35135	SCREW STUD 1/4-24	1
20	35145	TENSION RELEASE LEVER	1
21	35158	THREAD GUIDE (UPPER)	1
22	35158B	NUT 9/64-40	1
23	6025	SCREW 11/64-40 L=8	1
24	35159	THREAD GUIDE	1
25	10581	SCREW 15/64-28 L=8	1
26	10559	SCREW 3/16-32 L=8	1
27	35166	LARGE THREAD GUIDE	1
28	10685	SCREW 9/64-40 L=7	1
29	10683	THREAD GUIDE	1
30	1414	TENSION REGULATOR	1
31	1417	REGULATING SPRING	1
32	35161	THREAD TAKE-UP SPRING	1
33	1418	SLEEVE	1
34	35160	THREAD CONTROLLER STUD	1
35	35162	TENSION DISC	1
36	35163	TENSION WASHER	1
37	35165	TENSION SPRING	1
38	35276	LEVER SPRING	1
39	11154	SCREW 3/16-32	2
40	NH1032	NUT 3/16-32	1
41	10636	NUT 1/4-24	1
42	10571	SCREW M6×1 L=25	1
43	11154	SCREW 3/16-32	1
44	35164	TENSION DISC LEATHER	1



REF. NO.	PART NO.	DESCRIPTION	QTY.
1	35494C	BELT COVER ASM.	1
2	35255	BOBBIN WINDER ASM.	1
3	35240	BED HINGE	2
4	35241	SCREW, WASHER, & NUT ASM. 5/16-18	8
5	35280C	PEDAL ASM.	2
6	35280C-1	PEDAL ASM.	2
7	13094	PEDAL	1
8	35280C-2	PIPE	1
9	8132	ACCESSORY BOX	1
10	8123	OILER ASM.	1
11	8118	SCREW DRIVER, LARGE	1
12	8120	SCREW DRIVER, SMALL	1
13	35226	BOBBIN	3
14	19457	HEXAGON WRENCH 2.5	1
15	19458	HEXAGON WRENCH 3.0	1
16	19459	HEXAGON WRENCH 4.0	1
17	19460	HEXAGON WRENCH 5.0	1
18	NM(330/30)*	NEEDLE (1000H OR 6*3)	3
19	CALL	STOPPER ASM.	2
20	CALL	STOPPER ASM.	2
21	17082	CHAIN	1
22	CALL	S-PLUG	1
23	35242	OIL PAN	1
24	CALL	MOTOR PULLEY A65	1
25	11376C	MOTOR LEVER COMPLETE	1



Serial Number \_\_\_\_\_

Date Shipped \_\_\_\_\_

## Service Log

### Description

Date \_\_\_\_\_

[illegible]